



REPORT OF THE CHIEF EXECUTIVE OF EDUCATION LEEDS

EXECUTIVE BOARD: 14 March 2007

SUBJECT: Proposal to Make a Prescribed Alteration at Harehills Primary School

EXECUTIVE SUMMARY

1 Introduction

1.1 The purpose of the report is to seek permission from the Executive Board to consult on the proposal to permanently increase the admission number at Harehills Primary School from 60 to 90 pupil places establishing a three form entry school.

2.0 Background

2.1 In order to respond to an increase in demand for primary places in the Harehills area of Leeds, the admission number at Harehills Primary School was temporarily increased from 60 to 90 (3FE) for the academic years 2005-06 and 2006-07. The continued demand for places in this area led to a report being submitted to Admissions Forum on 21 November 2006 outlining the need to increase primary provision at Harehills Primary School to 3 FE for a further two years, 2007 and 2008.

2.2 The shortfall of places is particularly acute within a fairly well-defined area bounded by Harehills Avenue, Harehills Lane, Ashley Road, Bayswater Road, and Sholebroke Street. This increase in demand also affects the nearby school, Bankside Primary. Bankside currently has an admission number of 70 and therefore, whilst not strictly 3 FE school, it operates as such and was identified within the same Admissions Forum report with plans to also increase the admission number to 90.

2.3 Education Leeds believes this increase in demand in the area will continue and demand for places will be higher than the number of Reception places available in the area. Therefore it is considered that a permanent increase in provision at Harehills Primary School is necessary to meet the demand for places at the school.

3.0 Financial Implications

3.1 Additional accommodation will be required at the school. Plans are in place to provide additional temporary accommodation to meet the immediate demand for places. However, it will be necessary to provide more permanent additional classrooms and infrastructure to support the increase in admission number. Investigations are also underway to expand the actual site of the school.

4.0 Recommendation

Executive Board is asked to approve that formal public consultation is undertaken on a proposal to make a prescribed alteration at Harehills Primary School by raising the admission number from 60 to 90 pupils with effect from September 2009 to permanently establish a three form entry school.

Agenda Item:

Originator: George Turnbull

Telephone: 2243239

REPORT OF THE CHIEF EXECUTIVE OF EDUCATION LEEDS

EXECUTIVE BOARD: 14 March 2007

SUBJECT: Proposal to Make a Prescribed Alteration at Harehills Primary School

Electoral wards Affected:

Harehills/Gipton

Specific Implications For:

Ethnic Minorities	<input type="checkbox"/>
Women	<input type="checkbox"/>
Disabled People	<input type="checkbox"/>
Narrowing the Gap	<input type="checkbox"/>

Eligible for Call-in

Not Eligible for Call-in

1.0 PURPOSE OF THE REPORT

The purpose of the report is to seek permission from the Executive Board to consult on the proposal to permanently increase the admission number at Harehills Primary School from 60 to 90 pupil places establishing a three form entry school. An expansion of this size is deemed a prescribed alteration for which a statutory process must be followed.

2.0 BACKGROUND INFORMATION

2.1 Harehills Primary School is situated in the Chapel Allerton primary planning area. It is located a short distance away from Bankside Primary School (0.4 miles) which is part of the Harehills/Gipton planning area. These two planning areas are closely linked geographically, therefore, linking the two areas together provides a clearer picture of the overall area. These planning areas consist of a mix of community and voluntary aided schools, the majority of which are two form entry schools. The other schools in the two areas are Hovingham, Woodlands, Oakwood, Wykebeck,

Harehills St Augustine's and St Nicholas Catholic primary schools, and Bracken Edge, Hillcrest, Chapel Allerton, St Matthews Church of England and Holy Rosary and St Anne's Catholic primary schools. Information about their individual admission numbers and net capacities is available in Appendix 1, Table 1.

- 2.2** All the schools are located across a large area in the inner NE Wedge. Pupil numbers are increasing in the general area at a greater rate than other parts of the city and demand is particularly high for school places in the fairly well-defined area bounded by Harehills Avenue, Harehills Lane, Ashley Road, Bayswater Road, and Sholebroke Street. The four schools most likely to be affected are Hillcrest, Bankside, Harehills and Hovingham. Appendix 2 shows the projections for the four schools based on the 2006 PLASC figures. The distances between these schools. Is illustrated in Appendix 3.
- 2.3** Demand for places at Harehills Primary School has been particularly high along with that of Bankside Primary School. The admission number for Bankside Primary School is currently 70 but the school has been operating as a 3FE school for a number of years and is already larger than two-form entry. Therefore the additional 20 places to increase the school to a three-form entry does not require a statutory process.
- 2.4** To meet the demand for places, the admission number at Harehills Primary School was increased from 60 to 90 pupil places for the academic years 2005-06 and 2006-07. The continued demand for places in both schools led to a report being submitted to Admissions Forum on 21 November 2006 outlining the need to increase primary provision at Harehills and Bankside primary schools to 3 FE for a further two years, 2007 and 2008.

3.0 MAIN ISSUES

- 3.1** This inner NE area is one of the most populated in Leeds making it almost unique in its community profile (as shown in the map in Appendix 4). Within the area of the four schools mentioned in paragraph 2.2, demand for Reception places is higher than the current published number of Reception places available. Based on PLASC 2006 figures¹, Table 2 (Appendix 1) shows that in 2007, demand is projected to be 279 pupils for 250 places rising to 300 pupils in 2009. In addition, at Hillcrest and Harehills, the projected Reception numbers for 2006 was lower than the PLASC 2006 figures.
- 3.2** The increase in demand for Reception places is due to an upward trend in birth data from 1998 to 2005 in the Harehills/Bankside area. In 2003, further investigation revealed that out of the 57 planning areas in the city, Chapel Allerton and Harehills/Gipton were among the top three with the highest increases in birth rates. In these two planning areas, there was an increase per cohort of 12 children per year. This is exceptional in the Leeds context. Based on the current birth data, the projections indicate that in three years time there will be no spare capacity in the Harehills/Gipton planning area with a deficit of 0.3% (-5 pupil places) in September 2009 increasing to a deficit of 3.4% (67 pupil places) in September 2010. Within the Chapel Allerton planning area, there will be a surplus of 3% (58 pupil places) in 2009 but this is due to be in deficit by 2010 by 2% (34 pupil places) In addition, the data also indicates that birth rates are expected to continue to rise which will increase the

¹ At the time of drafting the report, PLASC 2007 figures were not available

pressure on demand for the schools in the areas.

- 3.3** A number of schools in the planning area currently have surplus places as is shown in Table 1 in the Appendix 1. However, two of these are Catholic schools which do not just act as community schools and draw children from a wider area; and Wykebeck Primary School is situated at the south eastern edge of the planning area and therefore lies outside the area of highest demand. A further significant factor affecting demand in this area, as indicated in the area projections in Appendix 2, is the increased pupil numbers in-year, possibly caused by new arrivals such as refugees, asylum seekers and economic migrants. Within these two planning areas, there are currently 104 primary age children identified as asylum seekers. This is illustrated by the map in Appendix 5. Unfortunately it is not possible to identify refugees or economic migrants.
- 3.4** Harehills Primary School temporarily increased its admission limit from 60 to 90 for the academic years 2005/06 and 2006/07 in response to local demand and is therefore operating as a 3FE school in Reception and Year 1. This school also attracts pupils from a relatively small area around the school with 93% of pupils living within 0.5 miles of the school and an average distance travelled of 0.28 miles.
- 3.5** The site at Harehills Primary School is 12,306m² and is quite limiting with regards to expansion. Options are being developed to increase the capacity of the school to accommodate the additional pupils and to enable to the local community to access its local school.
- 3.6** Shakespeare Primary School (in the Burmantofts Planning Area), re-opened in September 2006 as a PFI new build school and is the next nearest school to the south of Harehills Primary School (0.7 miles). However, until the school further establishes itself in the community, it is difficult to assess what impact, if any, this would have on the current demand for Harehills.
- 3.7** The projections for the two areas are based on the best information currently available which includes information on planned housing developments. However, the extent of in-migration, which is a factor in this area, and any future regeneration in the area is more difficult to predict. Regeneration of this area is planned through the EASEL project. These long term plans may have an impact on the housing around Harehills Primary Schools, however, timescales are still unclear and are unlikely to come to fruition in the next five years.
- 3.8** It is difficult to predict with any certainty that the level of demand will continue at its current rate, however, it is not anticipated that the increase in provision at Bankside or Harehills primary schools will have an adverse effect on other local schools. On the current figures, projections for the two planning areas indicate that in four years time, there will be a total of 745 pupils for 700 Reception places (including the Catholic schools) which shows a shortfall of 45 places. This high level of demand for places will affect all the schools in the two areas – with the exception of Wykebeck Primary School.
- 3.9** The document, A Framework for the Planning of School Places (2006), indicates that two-form entry schools would be Leeds' preferred model of provision. However, it is acknowledged that, in certain circumstances, other models of provision may be more appropriate to suit local conditions. Parental preference, density of population and local schools for local children are all important factors when considering the

pattern of provision in a particular area. This is clearly demonstrated by the popularity of a number of schools in these planning areas but specifically in the case of Harehills Primary School. The interaction of these factors, along with the high sibling factor and the proximity of the schools, contribute to this area being quite unique in Leeds.

3.10 This is a long term issue and a permanent solution to the imbalance between parental preference and the shortage of pupil places is being explored through the Primary Capital programme. However, more immediate means of alleviating the problems currently experienced by parents and children in this locality accessing their local schools also needs to be found. Two other options have been considered.

3.11 Option 1

3.12 Building a new, additional two-form entry school in the locality. Due to the scarcity of land in the area, and the associated timescales, it would be difficult to establish a new school to deal with the short to medium term pressures. Following discussions with the Regeneration Team in the Development Department and the Area Management Team, it has not been possible to identify a site in the area large enough to accommodate a 2FE school. If it had been possible to pursue this option, the timescales involved for construction work would be approximately 18 months with an additional 12 months for the planning and feasibility stage.

3.13 Option 2

3.14 Expansion at other schools in the area. This option was discounted for a number of reasons but in particular the demand for school places centres around Harehills and Bankside primary schools and the majority of the schools in the area are already two-form entry.

3.15 Early Years

3.16 Harehills has a nursery which would not be affected by this proposal. The nearest Children's Centre is situated on Compton Road.

3.17 Special Educational Needs

3.18 It is not expected that there will be any particular SEN issues as a result of this proposal. However, views will be sought from families as part of the consultation.

4.0 IMPLICATIONS FOR COUNCIL POLICY AND GOVERNANCE

4.1 Planning primary school places is relevant to a number of key priorities identified in the Children and Young People's Plan, the Asset Management Plan and the Corporate Plan, in terms of managing the supply and demand of school places and school improvement. It is also relevant to the Closing the Gap agenda, with the planning of school places taking consideration of wider socio-economic factors and regeneration.

5.0 LEGAL AND RESOURCE IMPLICATIONS

5.1 Financial Implications

5.2 To accommodate the increase in numbers, Harehills Primary School has been

identified as a priority under the Primary Capital Programme. This will involve a permanent extension to the building to provide additional classroom space and the infrastructure needed to meet the needs of the school. Discussions will take place with the management of the school to identify what will be needed but is anticipated this will include additional hall space, staff facilities, resource rooms and cloakroom areas. However, this is a longer term solution which may not be in place until 2010/11 at the earliest.

- 5.3** Plans are in place to provide temporary accommodation to meet the immediate needs of the school until a permanent solution is possible, This includes two storey accommodation comprising of classrooms, hall space and additional staff facilities. Further information on this is contained within the Executive report submitted by Education Leeds' Building Partnerships.
- 5.4** The site is very constrained and investigations are currently taking place with Leeds City Council to ascertain whether land adjacent to the school can be obtained to extend the school site and increase play space. However, again this is a longer term measure.
- 5.5 Legal Implications**
The review of primary provision fulfils the LEA's statutory requirement to keep under review the supply and demand of school places.
- 5.6** Following consultation, this proposal may lead to a statutory process being followed.
- 5.7 Equality Implications**
- 5.8** As part of the consultation process, this proposal will be subject to an equality impact assessment. However, there are no anticipated significant differential impacts on the basis of ethnicity, disability or gender associated with this proposal.
- 5.9 Indicative Timescale**
- 5.10** April/May 2007 – consultation meetings
July 2007 – Report to Executive Board summarising consultation
September 2007 – Statutory Notices published
December 2007 – Report to Executive Board reporting results of the statutory notice period
September 2009 - Effective date for increase in admission limit

6.0 RECOMMENDATION

- 6.1** Executive Board is asked to approve that formal public consultation is undertaken on a proposal to make a prescribed alteration at Harehills Primary School by raising the admission number from 60 to 90 pupils with effect from September 2009 to permanently establish a three form entry school.

Appendix 1

Demographic Data

Table 1: Pupil data for schools in the Chapel Allerton and Harehills/Gipton Planning Areas based on PLASC 2006 (brackets denote provisional September count figures)

SCHOOLS	ADM No.	NUMBER ON ROLL	NET CAPACITY	SURPLUS	
				Number	%
Chapel Allerton Planning Area					
Bankside PS	70	564	525	- 39	-7%
Bracken Edge PS	45	292	378	86	23%
Chapel Allerton PS	60	391	420	29)	7%
Hillcrest PS	60	382	387	5	1%
St Matthews CE PS	60	391	417	26	6%
Holy Rosary and St Anne's PS	30	174	210	36	17%

Harehills/Gipton Planning Area					
Harehills PS	60	449	473	24	5%
Hovingham PS	60	409	413	4	1%
Oakwood PS	60	357	420	63	15%
Woodlands PS	60	338	407	69	17%
Wykebeck PS	45	203	235	32	14%
Harehills St Augustine's Catholic PS	50	356	354	- 2	1%
St Nicholas Catholic PS	40	265	280	15	5%

Table 2: School Intake Projections

*() Brackets denote provisional September 06 count figures

School	Reception numbers for Sept 2006	Siblings and 1 st prefs Sept 07	Projections					Ad Limit
			2006	2007	2008	2009	2010	
Chapel Allerton Planning Area								
Bankside PS	91		96	86	87	89	97	70
Bracken Edge PS	41		43	40	41	42	47	45
Chapel Allerton PS	58		56	54	58	59	65	60
Hillcrest PS	58		52	52	55	56	61	60
St Matthews CE PS	56		57	55	59	61	67	60
Holy Rosary and St Anne's PS	27		27	28	27	28	28	30

Harehills/Gipton Planning Area								
Harehills PS	90		75	82	74	90	82	60
Hovingham PS	61		61	59	55	65	62	60
Oakwood PS	49		55	58	59	59	57	60
Woodlands PS	58		59	62	62	66	67	60
Wykebeck PS	20		20	24	27	23	28	45
Harehills St Augustine's Catholic PS	49		48	48	48	48	48	50
St Nicholas Catholic PS	39		39	39	39	39	39	40

Appendix 2

Projections for Harehills, Bankside, Hovingham and Hillcrest primary schools.

Harehills

	Rec	Yr 1	Yr 2	Yr 3	Yr 4	Yr 5	Yr 6	Total	Ad Lt	Capacity	Surplus	%
2001\2	59	60	60	52	59	58	60	408	60	408	0	0%
2002\3	57	59	59	57	54	58	60	404	60	420	16	4%
2003\4	60	60	60	59	61	57	60	417	60	473	56	12%
2004\5	60	59	56	57	58	60	60	410	60	473	63	13%
2005\6	90	59	60	60	61	59	60	449	90	473	24	5%
2006\7	75	90	58	61	62	62	60	469	90	473	4	1%
2007\8	82	74	89	60	64	63	63	494	60	473	-21	-4%
2008\9	74	81	74	91	63	64	64	511	60	473	-38	-8%
2009\10	90	73	80	76	95	63	66	543	60	473	-70	-15%
2010\11	82	89	73	82	79	96	64	566	60	473	-93	-20%

Bankside

	Rec	Yr 1	Yr 2	Yr 3	Yr 4	Yr 5	Yr 6	Total	Ad Lt	Capacity	Surplus	%
2001\2	72	83	81	78	70	69	74	527	70	499	-28	-6%
2002\3	71	75	83	83	70	72	74	528	70	499	-29	-6%
2003\4	68	69	72	84	81	73	71	518	70	525	7	1%
2004\5	81	69	71	75	84	82	73	535	70	525	-10	-2%
2005\6	91	81	65	75	75	84	93	564	70	525	-39	-7%
2006\7	96	91	79	68	75	76	89	574	70	525	-49	-9%
2007\8	86	96	89	83	68	75	82	578	70	525	-53	-10%
2008\9	87	86	93	93	82	68	81	592	70	525	-66	-13%
2009\10	89	88	84	98	93	83	74	607	70	525	-81	-15%
2010\11	97	89	85	87	97	93	90	637	70	525	-112	-21%

Hillcrest

	Rec	Yr 1	Yr 2	Yr 3	Yr 4	Yr 5	Yr 6	Total	Ad Lt	Capacity	Surplus	%
2001\2	38	42	43	30	43	34	41	271	45	450	179	40%
2002\3	49	56	58	52	42	49	46	352	60	387	35	9%
2003\4	34	52	55	54	55	46	49	345	60	387	42	11%
2004\5	49	38	53	55	58	60	48	361	60	387	26	7%
2005\6	58	56	38	54	60	55	61	382	60	387	5	1%
2006\7	52	65	56	38	58	61	56	387	60	387	0	0%
2007\8	52	59	65	56	41	59	63	396	60	387	-9	-2%
2008\9	55	59	59	66	61	41	60	401	60	387	-14	-4%
2009\10	56	61	59	60	71	62	42	411	60	387	-24	-6%
2010\11	61	63	62	60	64	71	63	443	60	387	-56	-15%

Hovingham

	Rec	Yr 1	Yr 2	Yr 3	Yr 4	Yr 5	Yr 6	Total	Ad Lt	Capacity	Surplus	%
2001\2	61	59	59	55	61	54	57	406	60	413	7	2%
2002\3	50	61	58	56	58	58	51	392	60	413	21	5%
2003\4	59	53	60	57	59	61	59	408	60	413	5	1%
2004\5	60	56	57	62	57	55	59	406	60	413	7	2%
2005\6	61	60	59	55	59	59	56	409	60	413	4	1%
2006\7	61	61	63	58	54	59	59	416	60	413	-3	-1%
2007\8	59	60	64	62	57	54	59	416	60	413	-3	-1%
2008\9	55	59	64	63	61	58	54	413	60	413	0	0%
2009\10	65	54	62	63	62	61	58	424	60	413	-11	-3%
2010\11	62	64	57	61	61	62	61	429	60	413	-16	-4%

Area Projections (including Catholic Schools)

Chapel Allerton Planning Area

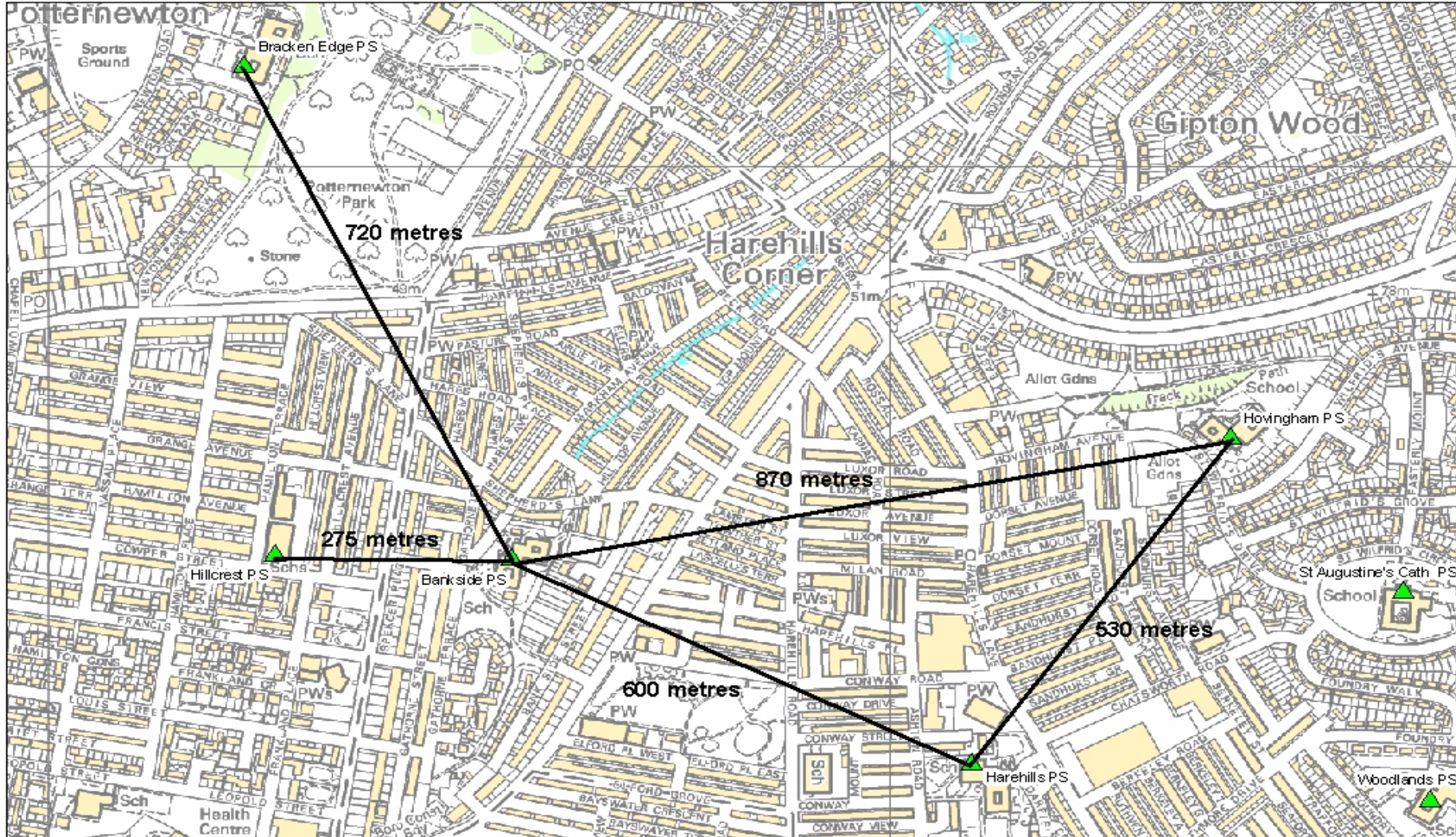
	REC	YR 1	YR 2	YR 3	YR 4	YR 5	YR 6	TOTAL	AD LT	CAPACITY	SURPLUS	%
2001\2	315	333	320	303	325	301	332	2229	355	2584	499	19.3%
2002\3	316	312	325	306	297	317	307	2180	340	2391	211	8.8%
2003\4	277	313	301	321	306	301	314	2133	340	2360	227	9.6%
2004\5	303	279	317	310	326	309	305	2149	340	2360	211	8.9%
2005\6	331	310	282	312	312	320	327	2194	325	2360	166	7.0%
2006\7	332	337	311	283	315	311	332	2220	325	2360	140	5.9%
2007\8	315	338	339	313	285	313	324	2226	325	2360	134	5.7%
2008\9	327	321	339	340	316	283	326	2251	325	2360	109	4.6%
2009\10	334	333	322	341	344	314	294	2282	325	2360	78	3.3%
2010\11	363	340	335	323	344	342	327	2376	325	2360	-16	-0.7%

Harehills/Gipton Planning Area

	REC	YR 1	YR 2	YR 3	YR 4	YR 5	YR 6	TOTAL	AD LT	CAPACITY	SURPLUS	%
2001\2	343	350	332	330	331	321	374	2382	375	2560	178	7.0%
2002\3	306	332	346	326	331	326	323	2290	375	2527	237	9.4%
2003\4	330	323	344	347	333	347	330	2354	375	2580	226	8.8%
2004\5	330	335	326	344	346	336	347	2364	375	2580	216	8.4%
2005\6	366	328	341	329	341	343	329	2377	405	2580	203	7.9%
2006\7	358	371	336	343	329	344	341	2423	405	2580	157	6.1%
2007\8	371	362	379	338	342	333	341	2465	375	2580	115	4.4%
2008\9	365	375	370	381	337	344	329	2503	375	2580	77	3.0%
2009\10	391	370	384	372	382	342	341	2582	375	2580	-2	-0.1%
2010\11	382	395	378	386	373	386	340	2640	375	2580	-60	-2.3%

Appendix 3

Primary schools in Harehills

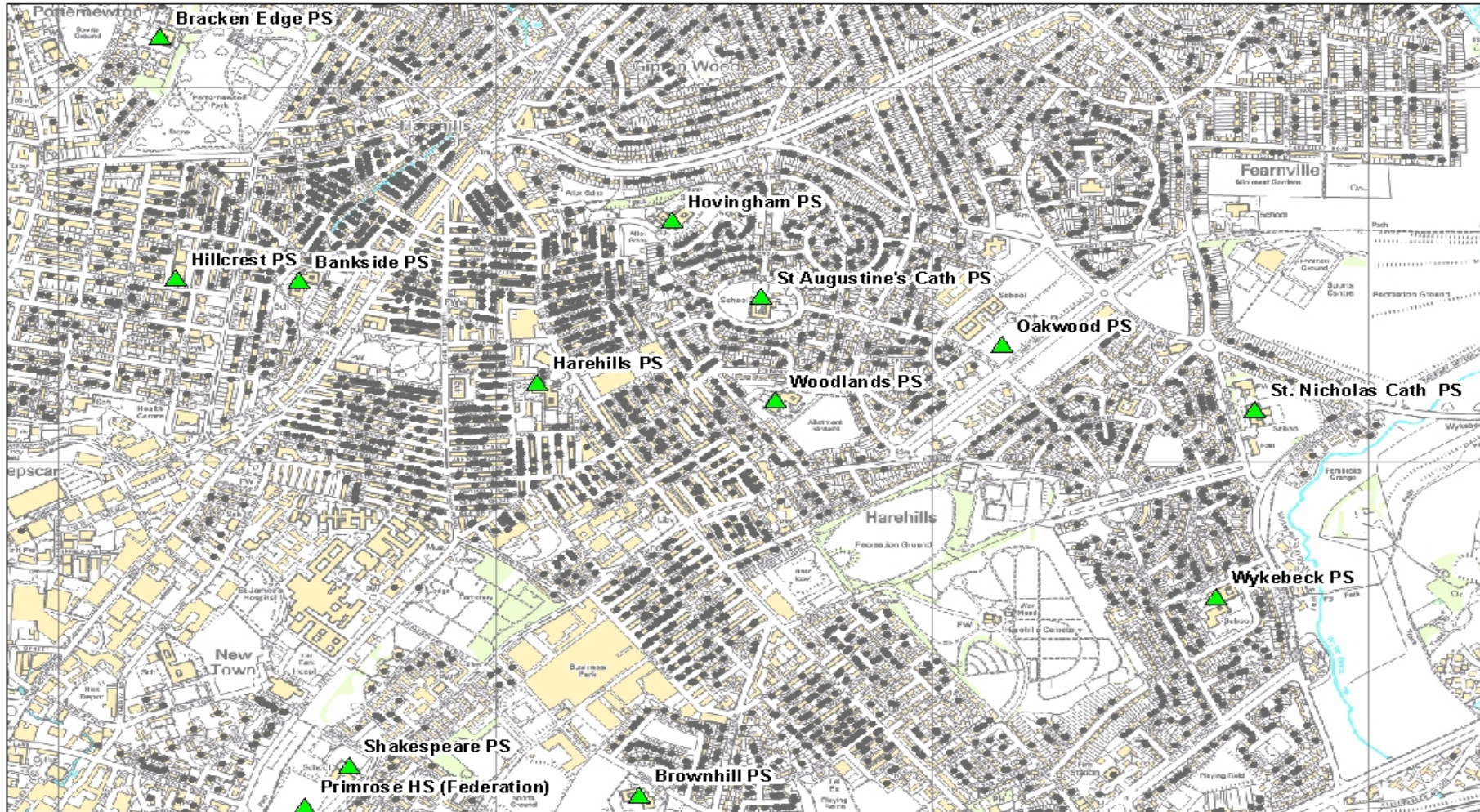


This map is based upon Ordnance Survey material with the permission of Ordnance Survey on behalf of the Controller of Her Majesty's Stationery office © Crown copyright. 0 0.045 0.09 0.18 Miles
 Unauthorised reproduction infringes Crown copyright and may lead to prosecution or civil proceedings. Leeds City Council 100019567 2006

Map Document: (G:\GISNewProjects\School Organisation\Primary\Roy\Harehills Area.mxd)
 10/11/2006 -- 16:05:52

Appendix 4

Primary schools in Harehills with primary-age children

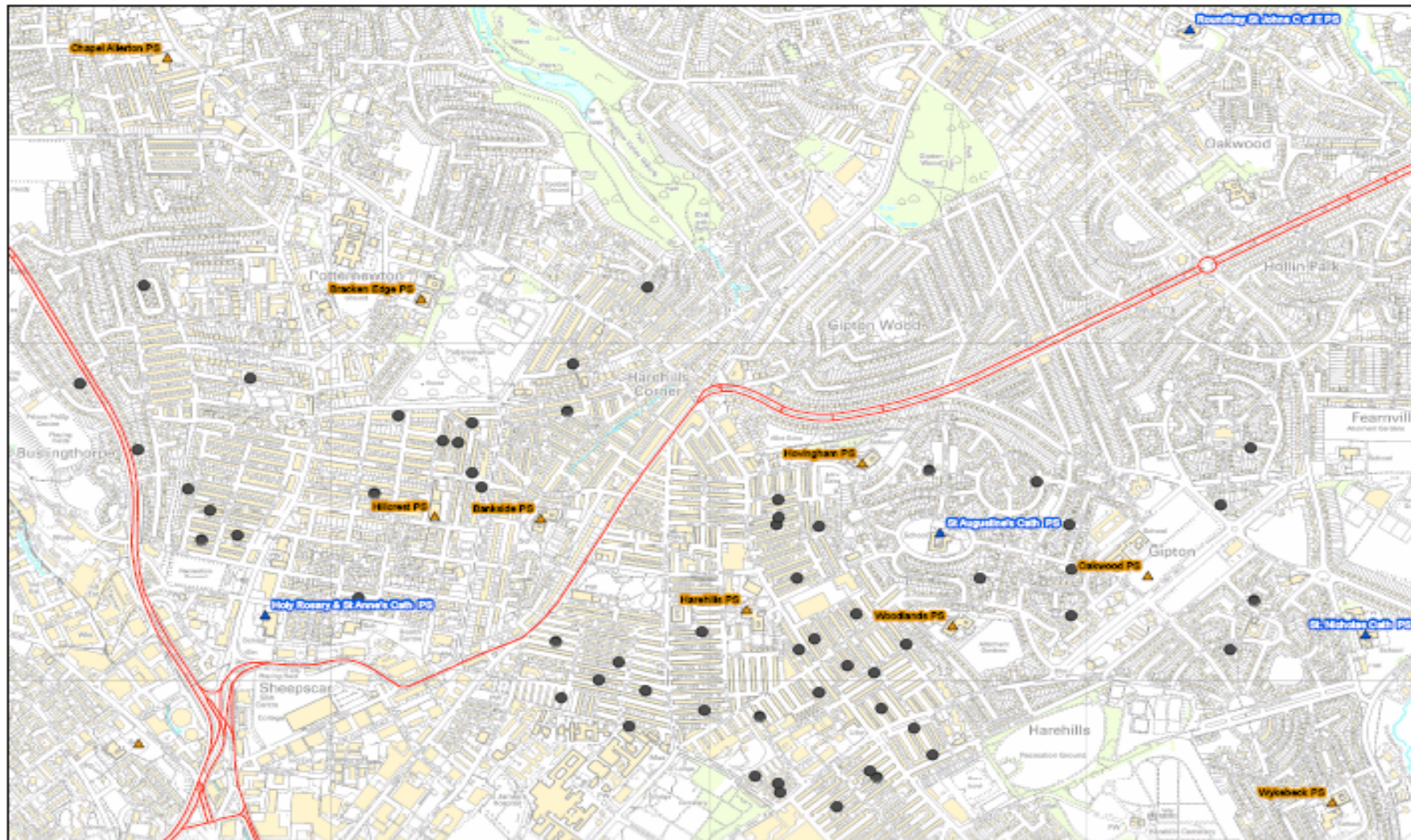


This map is based upon Ordnance Survey material with the permission of Ordnance Survey on behalf of the Controller of Her Majesty's Stationery office © Crown copyright. Unauthorised reproduction infringes Crown copyright and may lead to prosecution or civil proceedings. Leeds City Council 100019567 2006

Map Document: (G:\GIS\NewProjects\School Organisation\Primary\Roy\Harehills Area.mxd)
10/11/2006 -- 16:05:52

Appendix 5

Asylum Seeker Primary School Age Children (At 1st Jan 2007)



This map is based upon Ordnance Survey material with the permission of Ordnance Survey on behalf of the Controller of Her Majesty's Stationery office © Crown copyright. Unauthorised reproduction infringes Crown copyright and may lead to prosecution or civil proceedings. Leeds City Council 100019557 2006
Thursday, February 15, 2007 15:50:40
G:\GIS\New Projects\School Organisation\Primary\New\070215 - Asylum Seekers Harehills for AJ\AsylumSeekerPupilsHarehills2.mxd